

# SMART GREEN HOUSE FOR HORTICULTURE



## **VISION**

**Actualizing Juara Lahir dan Batin  
(Winning The Inner and Outer Self)  
with Innovation and Collaboration**

## **MISSION**

**Improving Productivity And Economic  
Competitiveness To Be More Prosperous And Fair  
Through Utilization Digital Technology, Centres Of  
Innovation, And Development Stakeholders**

## **REGIONAL DEVELOPMENT PRIORITIES**

**2018 – 2023**

**Strengthening Sustainable Food Security  
System Through Sustainable Agriculture 4.0**



**The smart greenhouse is A revolution in agriculture, creating A self-regulating, microclimate suitable for plant growth through the use of sensors, actuators, and monitoring and control systems that optimise growth conditions and automate the growing process**

**The market is expected to experience significant growth due to increasing population, climate change and, urbanization**

**Quality products through strict control of the cultivation environment for plant plants and greenhouses can be achieved through this indoor farming**

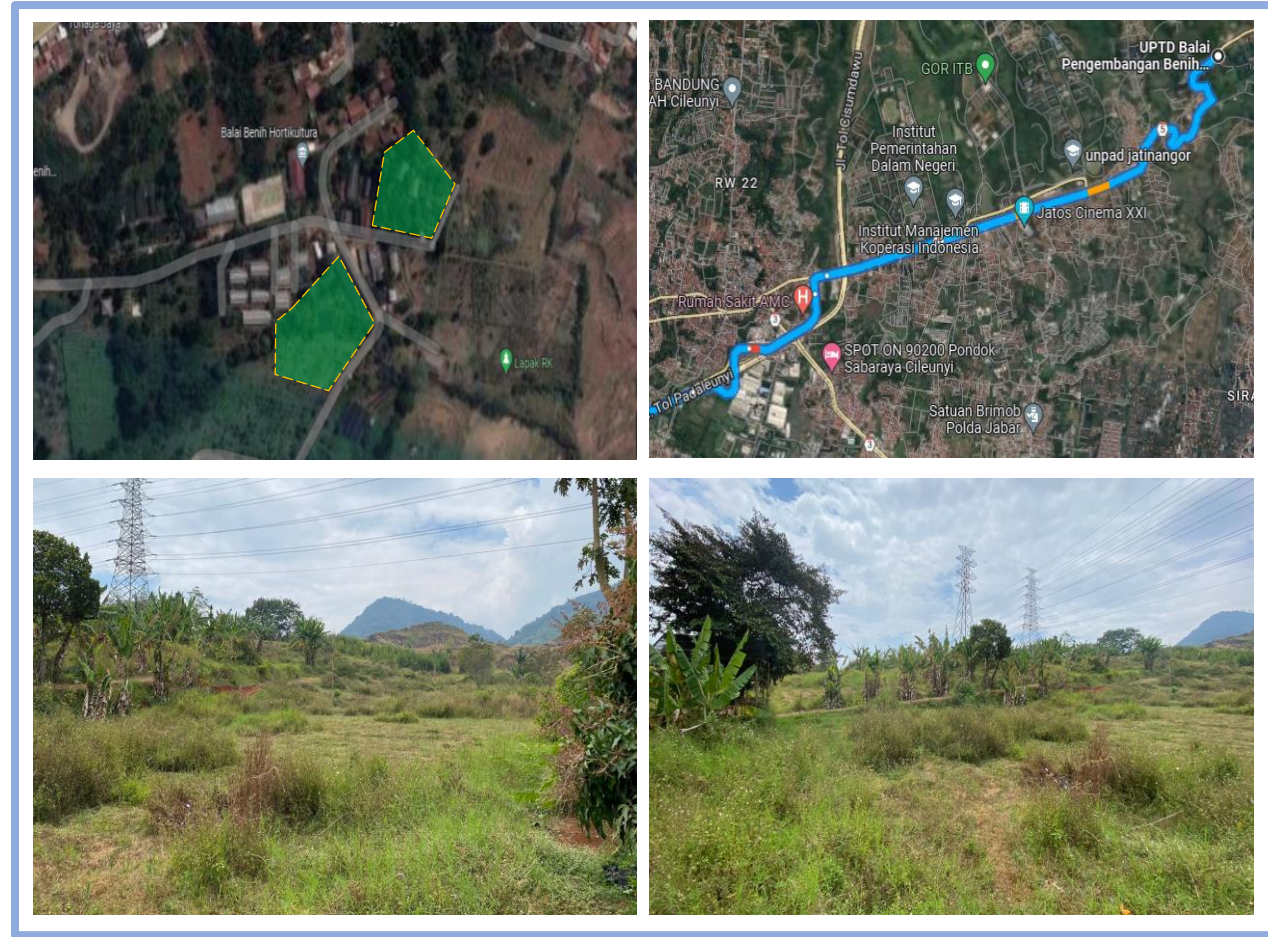


Smart farming based on IoT technologies enables farmers to reduce waste and enhance productivity ranging from the quantity of fertilizer utilized and enabling efficient utilization of resources such as water, electricity, etc. IoT smart farming solutions is a system that is built for monitoring the crop field with the help of sensors (light, humidity, temperature, soil moisture, crop health, etc.) and automating the irrigation system





# SMART GREEN HOUSE LOCATION PLAN

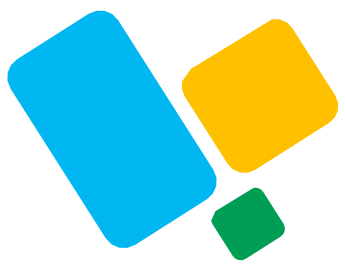




### Key Investment Highlight

<b>Location</b>	West Java Province
<b>Estimated Investment Value</b>	IDR 500 Million [USD 32.822] For 100 square meter Green House
<b>Total Area/Land Status</b>	2 Ha / government land
<b>Project Owner</b>	West Java Provincial Office of Food Crops and Horticulture
<b>Financial Feasibility</b>	Projected Income : IDR 250 Million For one Period IRR : 4,34 % Payback Period : 3 years 7 month





# THANK YOU

DINAS TANAMAN PANGAN DAN HORTIKULTURA PROVINSI JAWA BARAT